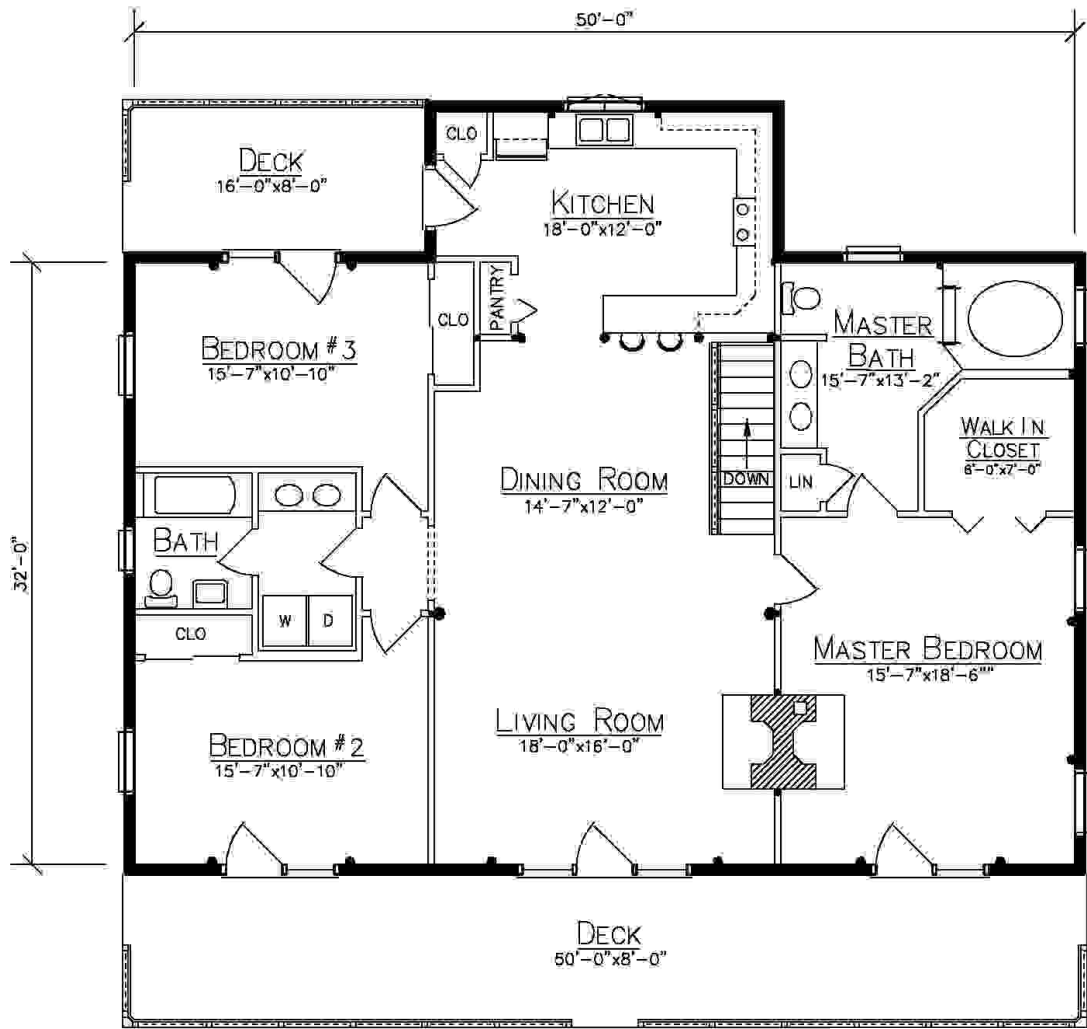


SCOTTSDALE



FLOOR PLAN

Ward Since 1923

CEDAR LOG HOMES

Log, Hybrid & Timber Homes

Our past. Your future.

**P.O. Box 72
Houlton, ME 04730
800-341-1566**

www.wardcedarloghomes.com

*First Floor
1744 Sq. Ft.

3 Bedrooms
2 Baths*

