



**GAMBREL GARAGE**

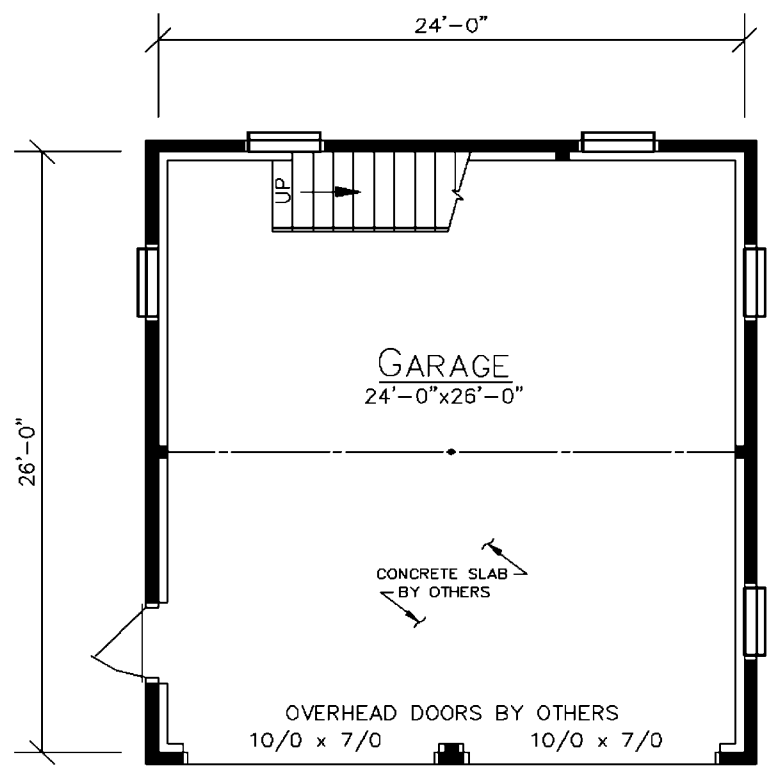
*First Floor*  
624 Sq. Ft.

*Loft*  
463 Sq. Ft.

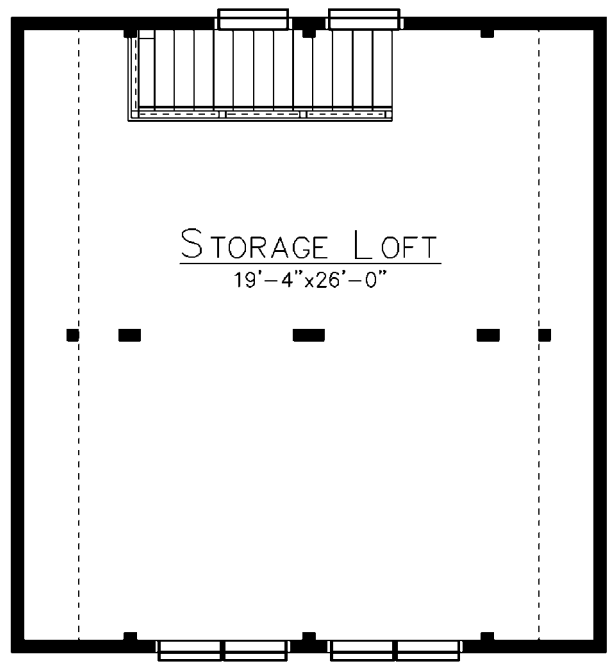


**CEDAR LOG HOMES**  
Log, Hybrid & Timber Homes  
*Our past. Your future.*

**P.O. Box 72**  
**Houlton, ME 04730**  
**800-341-1566**  
[www.wardcedarloghomes.com](http://www.wardcedarloghomes.com)



FLOOR PLAN



LOFT PLAN

© 2018 Ward Cedar Log Homes. Artist's rendering. Actual homes may vary.