

CEDAR GROVE

*Ward* Since 1923

**CEDAR LOG HOMES**

Log, Hybrid & Timber Homes

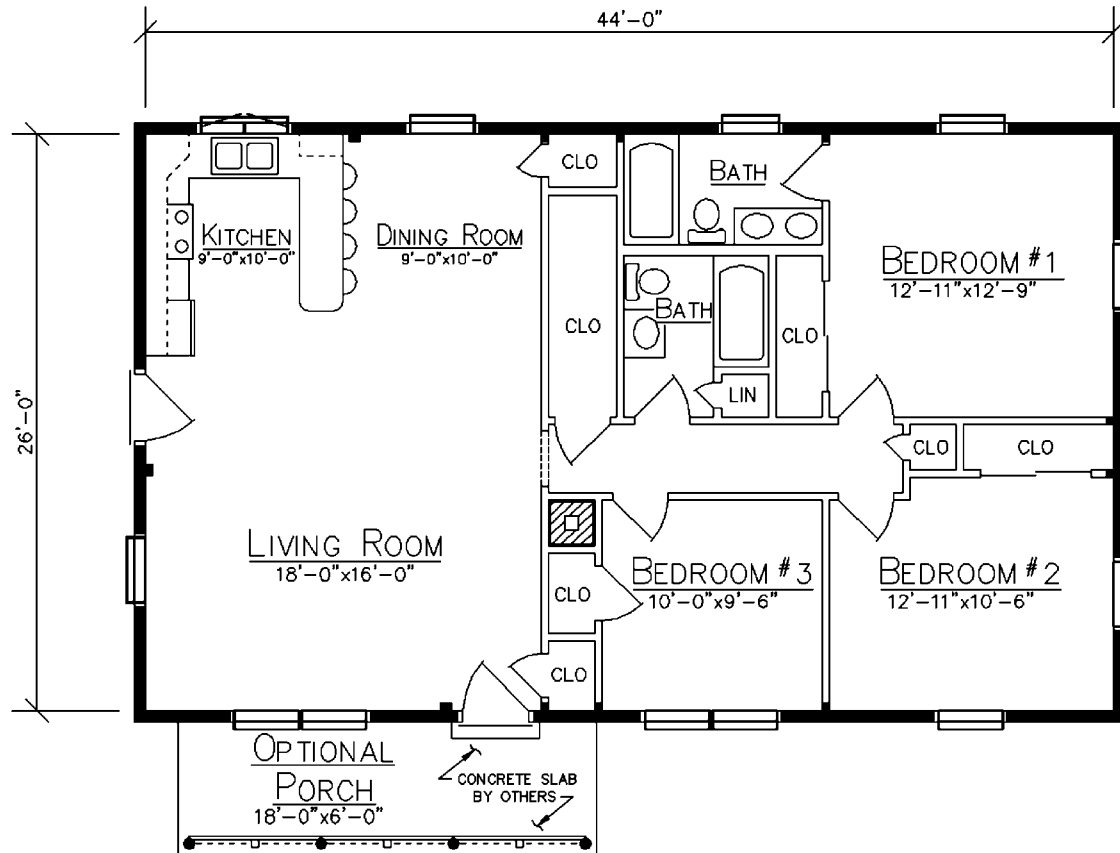
*Our past. Your future.*

P.O. Box 72

Houlton, ME 04730

800-341-1566

[www.wardcedarloghomes.com](http://www.wardcedarloghomes.com)



*First Floor*  
1144 Sq. Ft.

*3 Bedrooms*  
*2 Baths*

FLOOR PLAN