

Since 1923
Ward

CEDAR LOG HOMES

Log, Hybrid & Timber Homes

Our past. Your future.

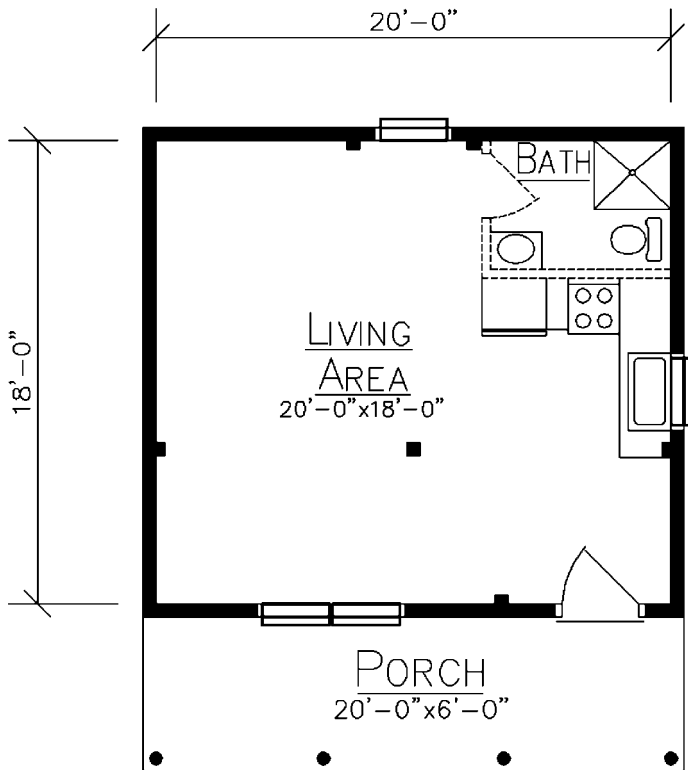
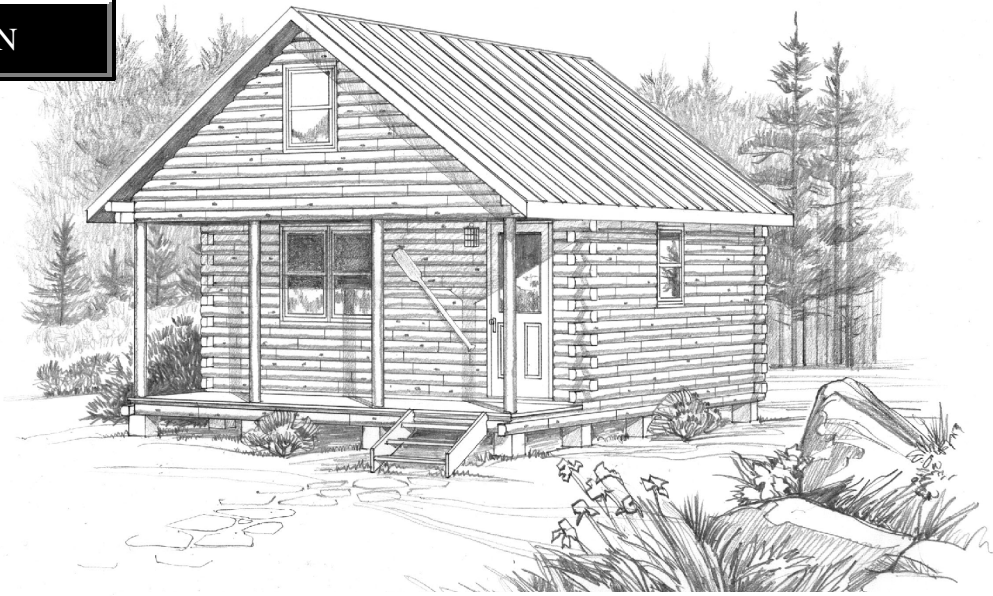
P.O. Box 72

Houlton, ME 04730

800-341-1566

www.wardcedarloghomes.com

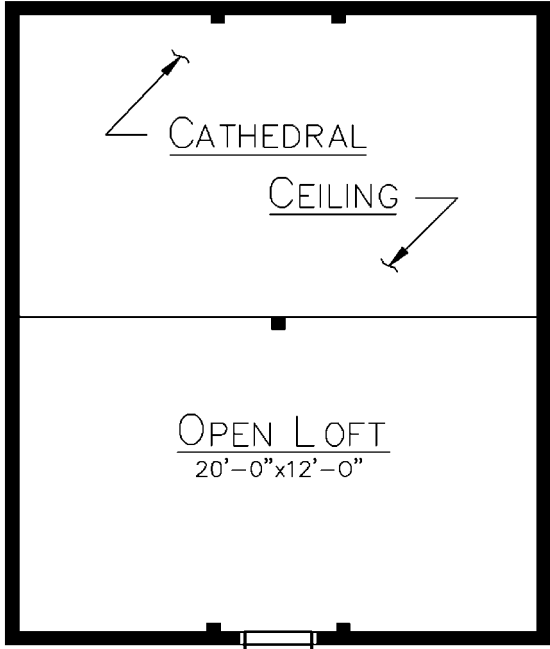
MATAGAMON



FLOOR PLAN

First Floor
360 Sq. Ft.

Loft
240 Sq. Ft.



LOFT PLAN

© 2018 Ward Cedar Log Homes. Artist's rendering. Actual homes may vary.