

# WALTON'S MOUNTAIN

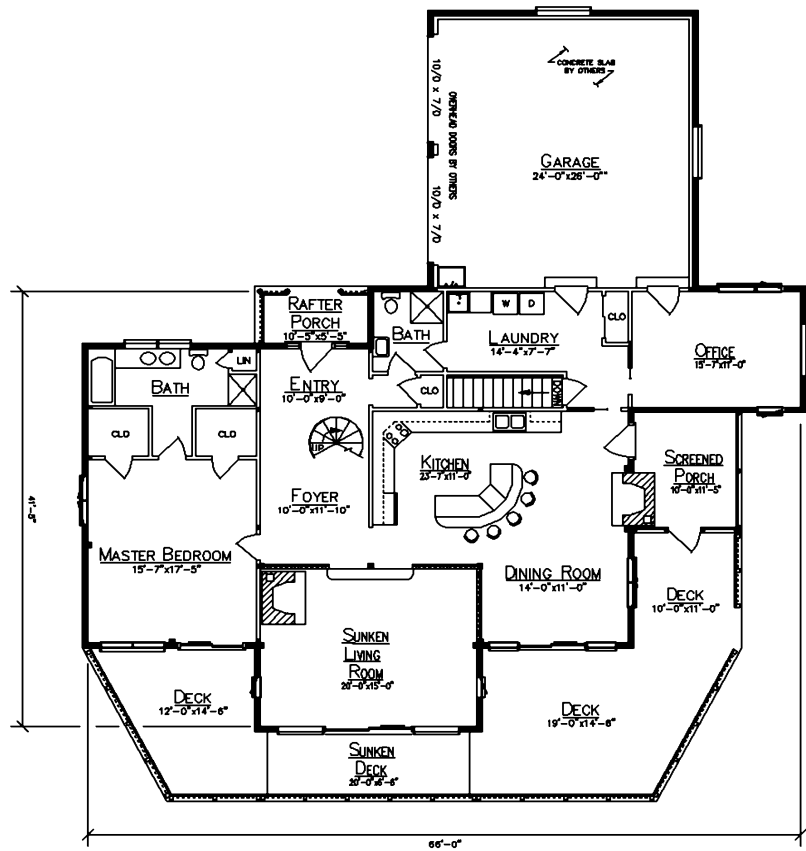


## HOME SPECIFICATIONS

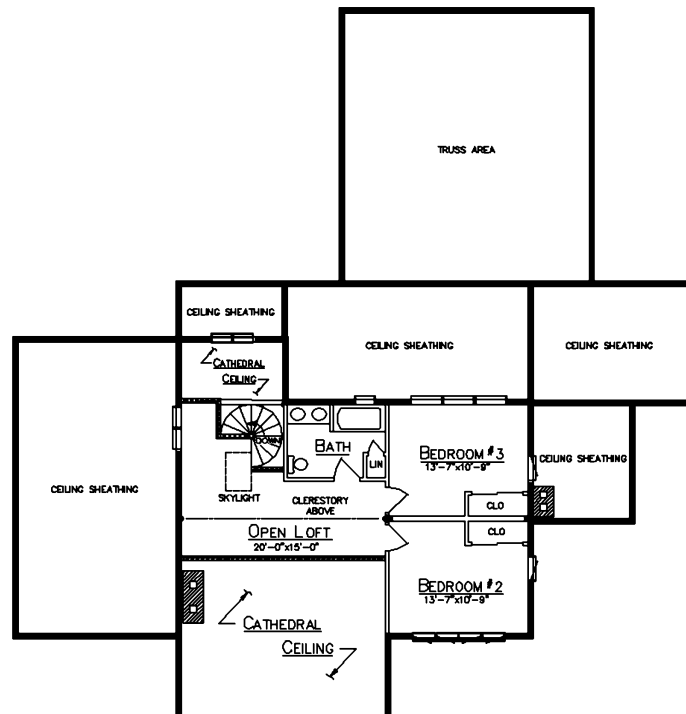
First Floor	1865 Sq. Ft.
Loft	560 Sq. Ft.
Bedrooms	2
Baths	3
Garage	630 Sq. Ft.
Porches	170 Sq. Ft.
Decks	711 Sq. Ft.

- Sunken Living Room
- Laundry
- 5/12 Exposed Rafter House
- 5/12 Truss Roof Garage
- Clerestory

FLOOR PLAN



LOFT PLAN



*Since 1923*  
**Ward**  
**CEDAR LOG HOMES**  
*Our past. Your future.*

**Ward Cedar Log Homes**

PO Box 72  
 Houlton, Maine 04730

**1-800-341-1566**

info@wardcedarloghomes.com  
 www.wardcedarloghomes.com