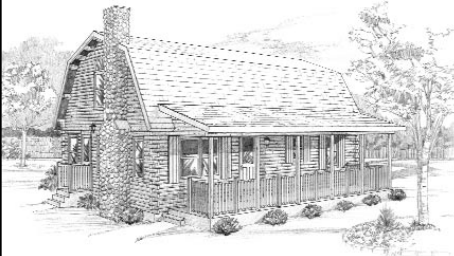


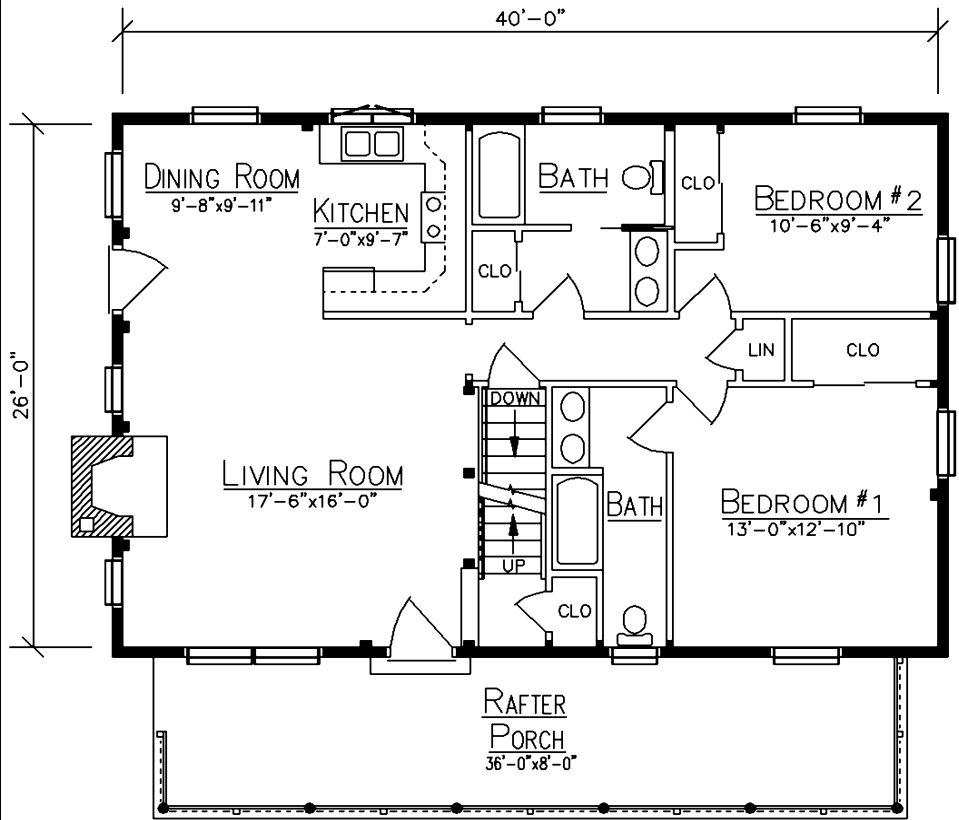
STILLWATER



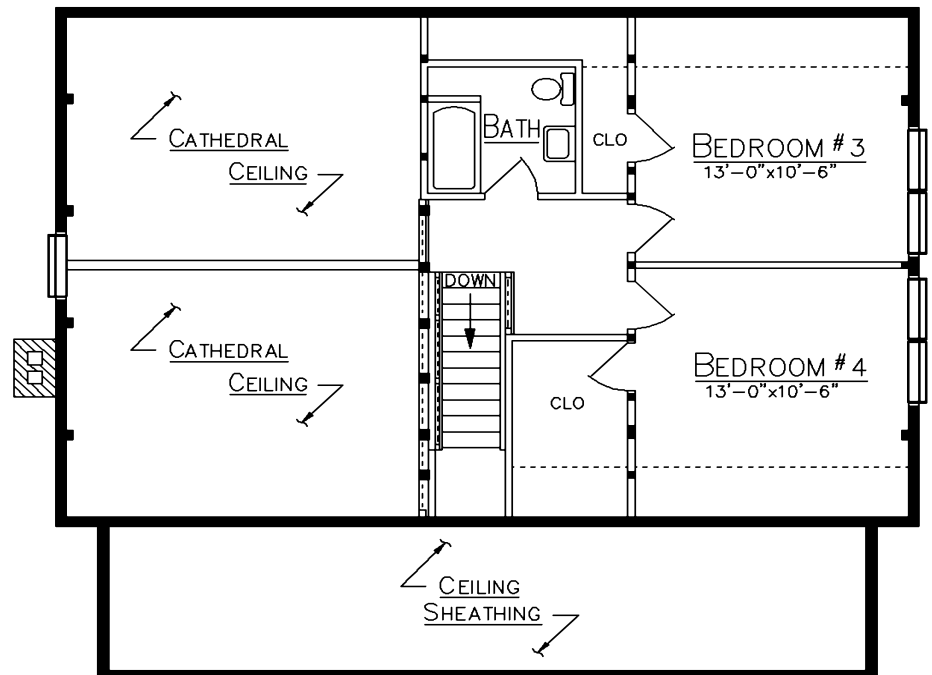
HOME SPECIFICATIONS

First Floor	1040 Sq. Ft.
Loft	440 Sq. Ft.
Bedrooms	4
Baths	3
Porch	288 Sq. Ft.

- Gambrel Purlin Roof
- Arched Gable Window



FLOOR PLAN



LOFT PLAN

Ward Since 1923
CEDAR LOG HOMES
Our past. Your future.

Ward Cedar Log Homes

PO Box 72
 Houlton, Maine 04730

1-800-341-1566

info@wardcedarloghomes.com
 www.wardcedarloghomes.com