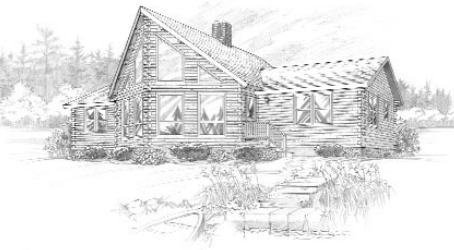


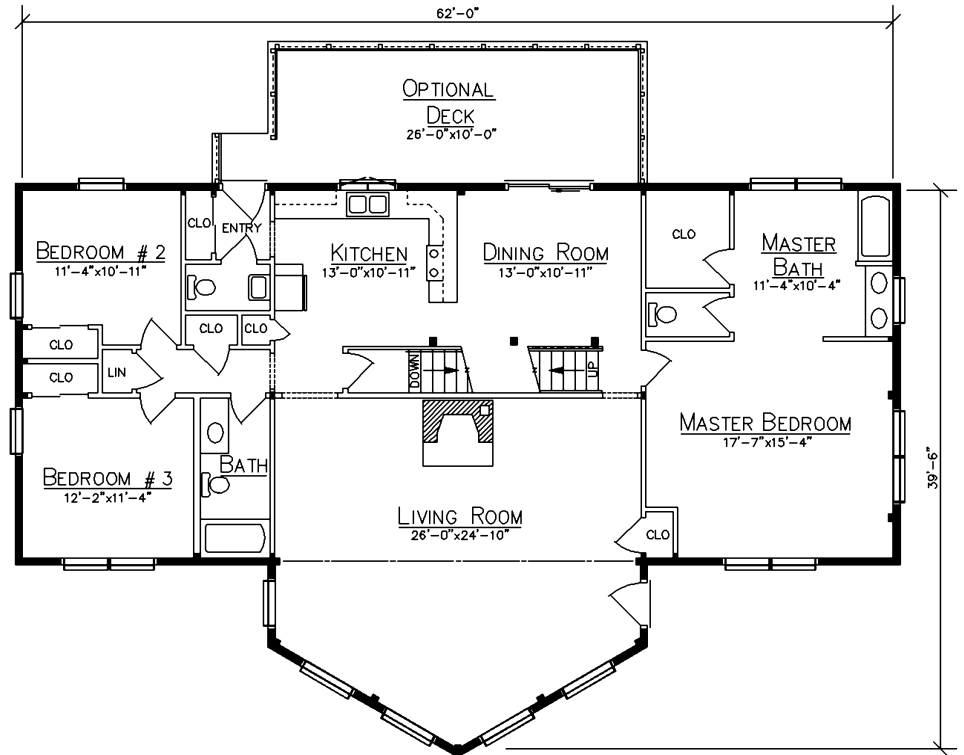
# SEDONA



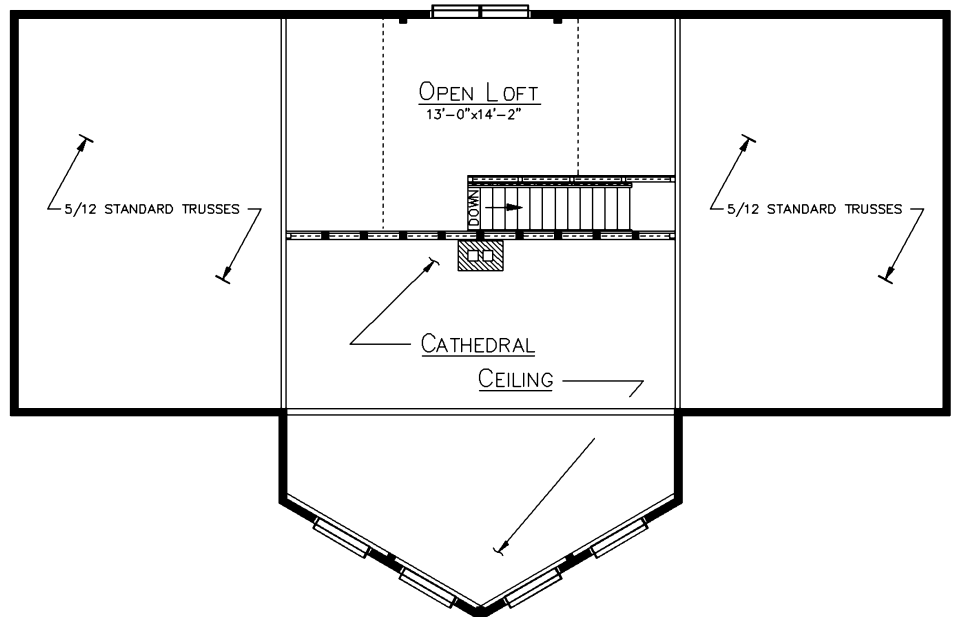
## HOME SPECIFICATIONS

First Floor	1866 Sq. Ft.
Loft	164 Sq. Ft.
Bedrooms	3 or 4
Baths	2.5
Optional Deck	260 Sq. Ft.

- Prow Front
- 9/12 Purlin Center Roof
- 5/12 Truss Roof Ells
- Triangular Gable Windows



FLOOR PLAN



LOFT PLAN

*Since 1923*  
**Ward**  
**CEDAR LOG HOMES**  
*Our past. Your future.*

**Ward Cedar Log Homes**

PO Box 72  
 Houlton, Maine 04730

**1-800-341-1566**

info@wardcedarloghomes.com  
 www.wardcedarloghomes.com