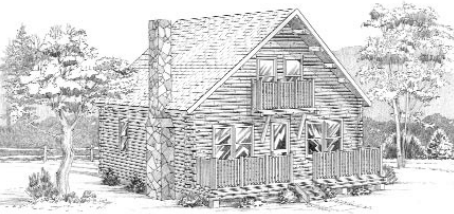


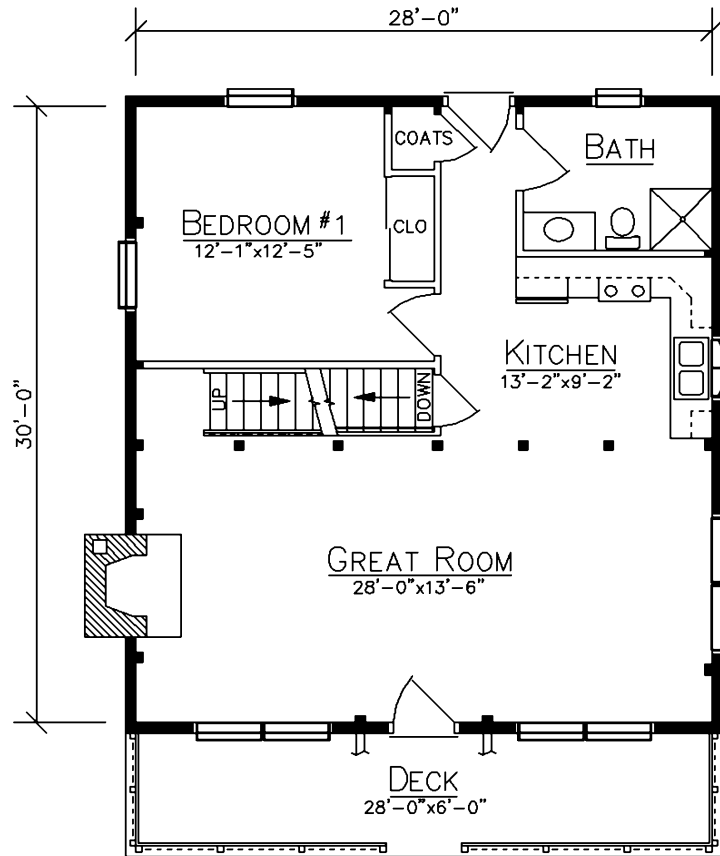
# RIVERTON



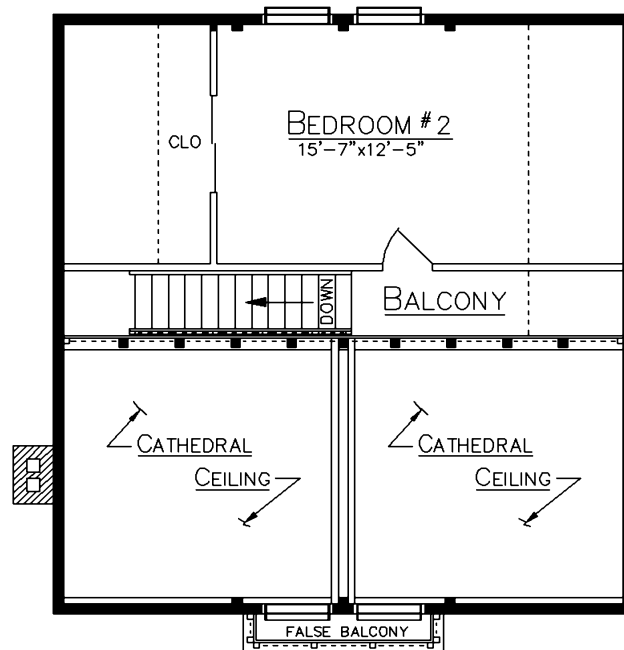
## HOME SPECIFICATIONS

First Floor	896 Sq. Ft.
Loft	265 Sq. Ft.
Bedrooms	2
Bath	1
Deck	168 Sq. Ft.
False Balcony	18 Sq. Ft.

- 9/12 Purlin Roof
- 3 Extra Rows Of Logs, Increase The Loft Space
- Outswept Roof Overhang On Front
- Cathedral Ceiling Living Area



FLOOR PLAN



LOFT PLAN

*Since 1923*  
**Ward**  
**CEDAR LOG HOMES**  
*Our past. Your future.*

**Ward Cedar Log Homes**

PO Box 72  
 Houlton, Maine 04730

**1-800-341-1566**

info@wardcedarloghomes.com  
 www.wardcedarloghomes.com