

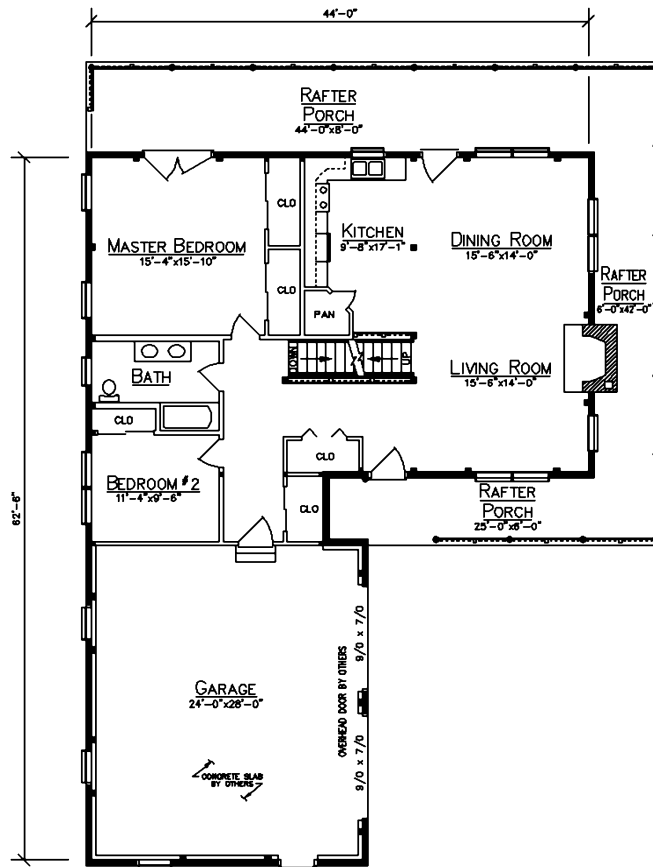
# PRINCETON



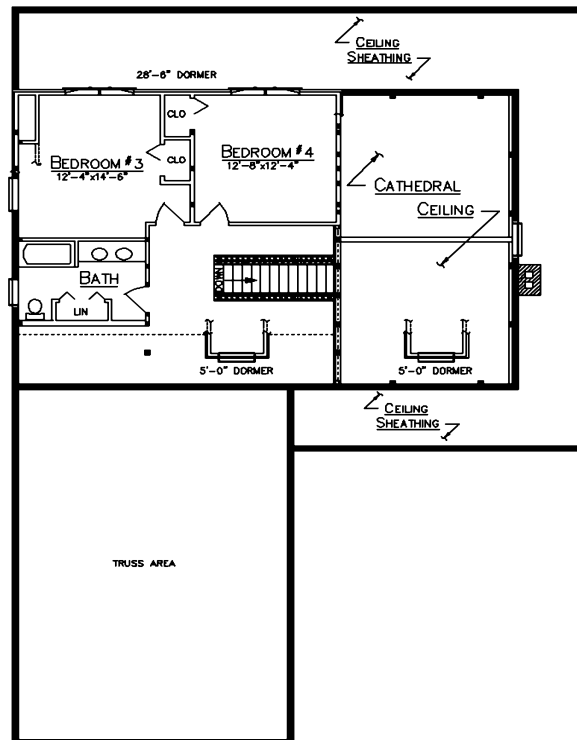
## HOME SPECIFICATIONS

First Floor	1360 Sq. Ft.
Loft	617 Sq. Ft.
Bedrooms	4
Baths	2
Garage	672 Sq. Ft.

- Wrap-Around 3/12 Rafter Porches
- 28' - 6" Shed Roof, 4/12 Rear Dormer
- Two Front Gabled Dormers
- 10/12 Purlin House
- 6/12 Truss Garage



FLOOR PLAN



LOFT PLAN

*Since 1923*  
**Ward**  
**CEDAR LOG HOMES**  
*Our past. Your future.*

### Ward Cedar Log Homes

PO Box 72  
 Houlton, Maine 04730

**1-800-341-1566**

info@wardcedarloghomes.com  
 www.wardcedarloghomes.com