

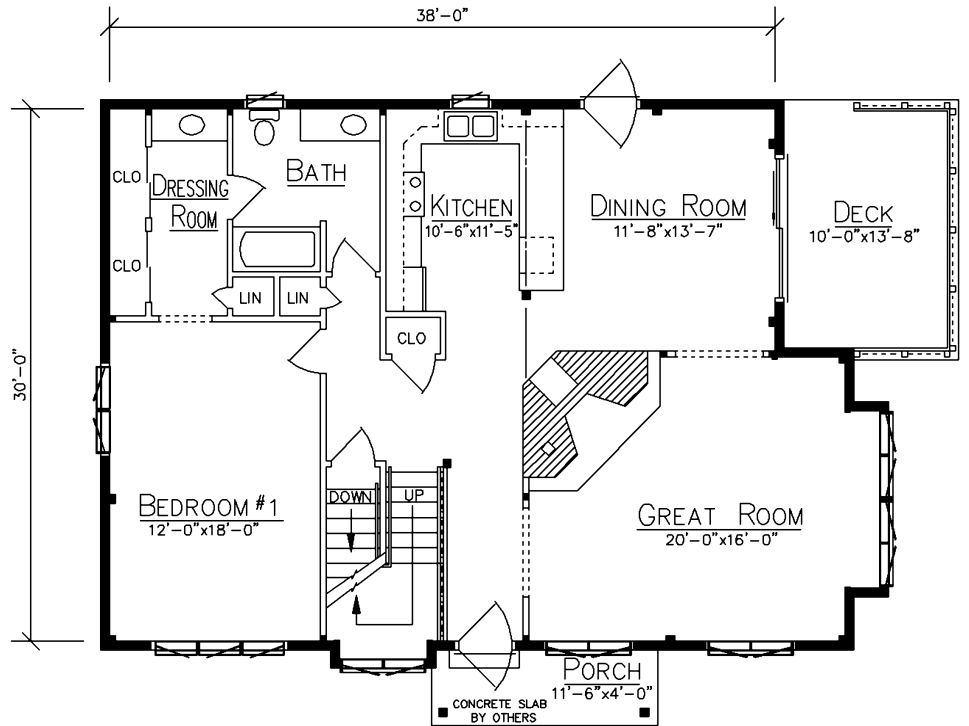
POINT JUDITH



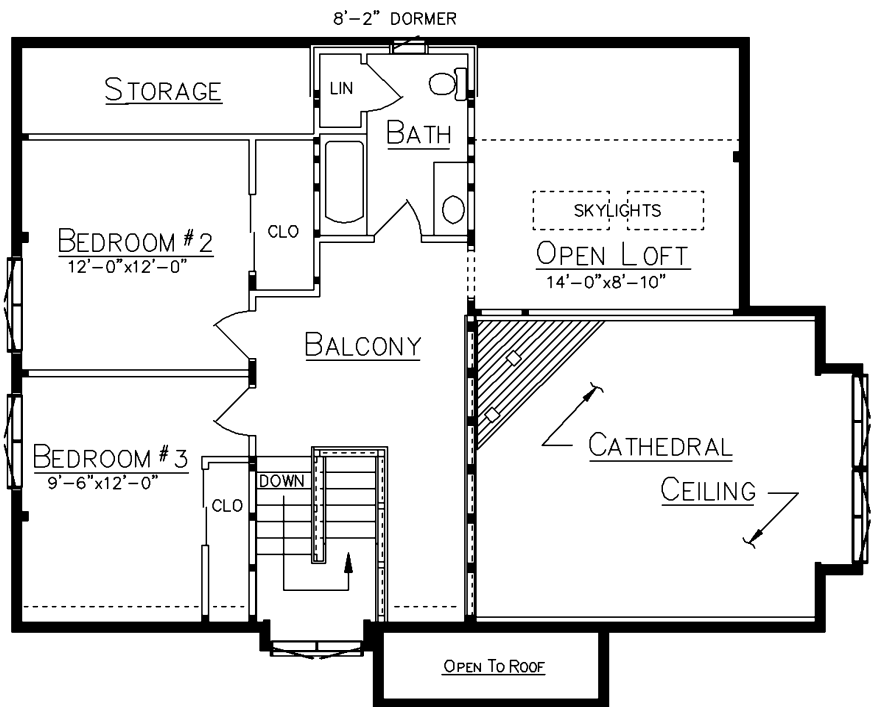
HOME SPECIFICATIONS

First Floor	1230 Sq. Ft.
Loft	677 Sq. Ft.
Bedrooms	3 or 4
Baths	2
Porch	46 Sq. Ft.
Deck	137 Sq. Ft.

- Casement Style Windows
- 12/12 Purlin Roof
- Passive Solar Design
- 8 Ft. Shed Roof, 3/12 Rear Dormer



FLOOR PLAN



LOFT PLAN

Since 1923
Ward
CEDAR LOG HOMES
Our past. Your future.

Ward Cedar Log Homes

PO Box 72
 Houlton, Maine 04730

1-800-341-1566

info@wardcedarloghomes.com
 www.wardcedarloghomes.com