

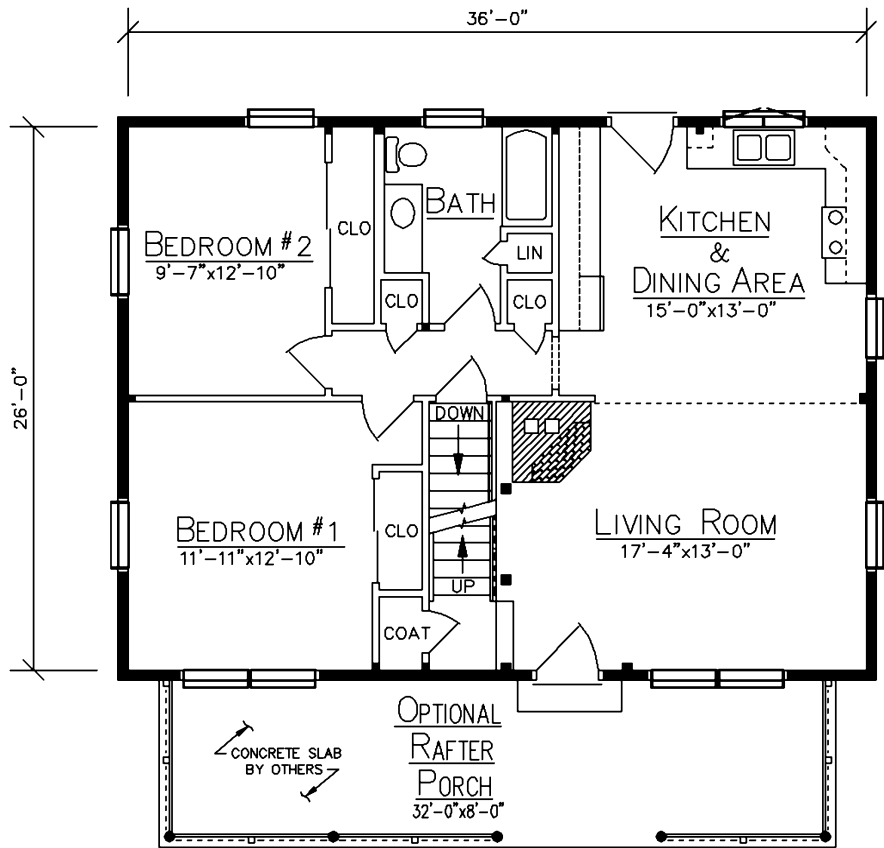
LEXINGTON



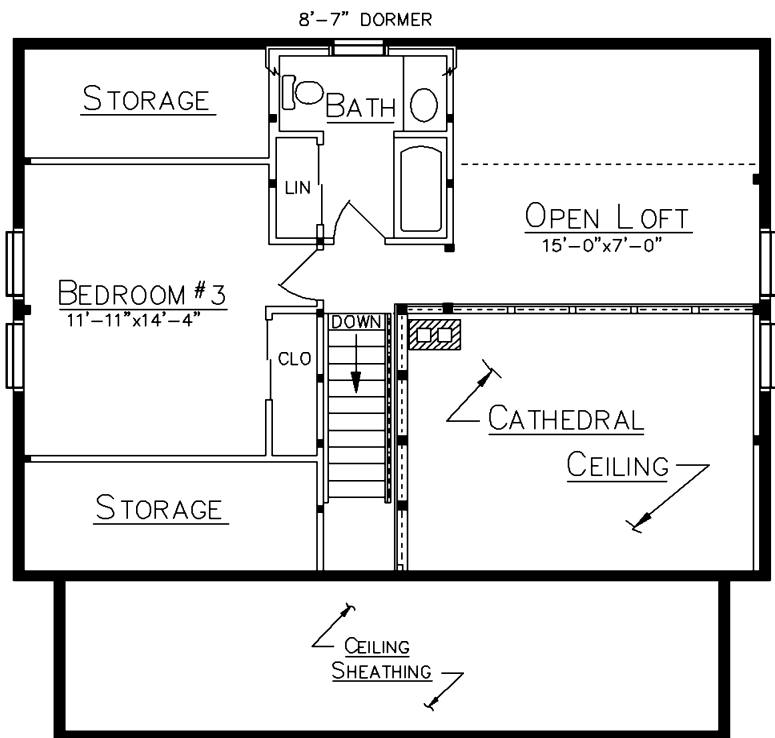
HOME SPECIFICATIONS

First Floor	936 Sq. Ft.
Loft	450 Sq. Ft.
Bedrooms	3
Baths	2
Optional Porch	256 Sq. Ft.

- 10/12 Purlin Roof
- 9 Ft. Rear Dormer, 3/12 Shed Roof



FLOOR PLAN



LOFT PLAN

Since 1923
Ward
CEDAR LOG HOMES
Our past. Your future.

Ward Cedar Log Homes

PO Box 72
 Houlton, Maine 04730

1-800-341-1566

info@wardcedarloghomes.com
 www.wardcedarloghomes.com