

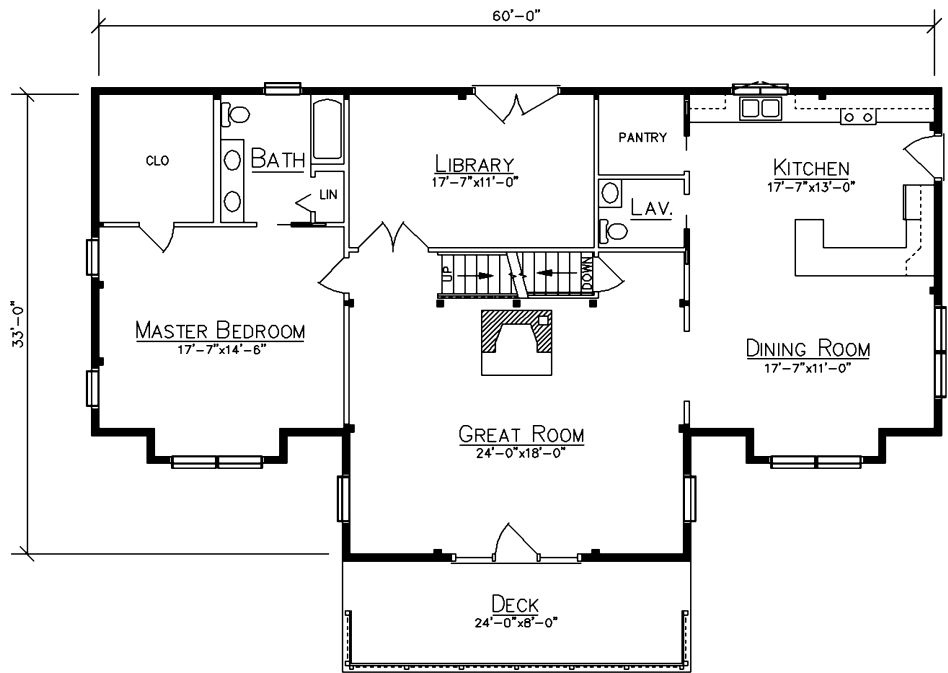
HEARTWOOD



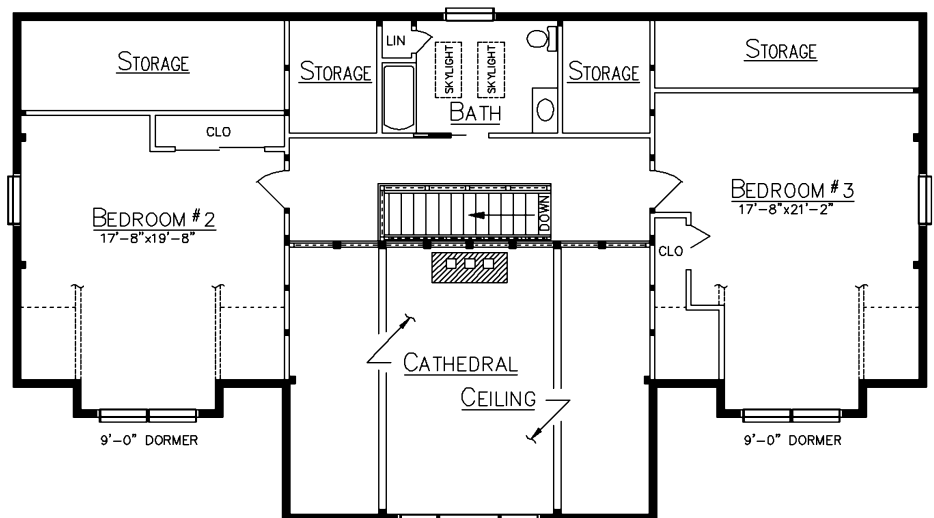
HOME SPECIFICATIONS

First Floor	1694 Sq. Ft.
Loft	810 Sq. Ft.
Bedrooms	3
Baths	2.5
Deck	192 Sq. Ft.

- 12/12 Purlin Center Section
- 10/12 Purlin Ells
- Specialty Windows Per Plan



FLOOR PLAN



LOFT PLAN

Since 1923
Ward
CEDAR LOG HOMES
Our past. Your future.

Ward Cedar Log Homes

PO Box 72
 Houlton, Maine 04730

1-800-341-1566

info@wardcedarloghomes.com
 www.wardcedarloghomes.com