

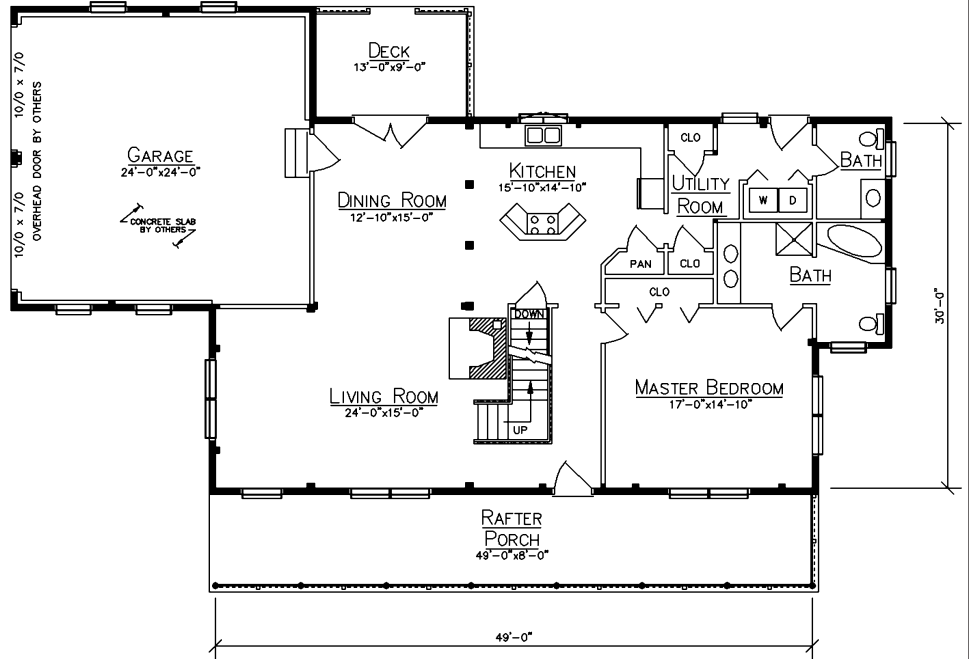
# COOPERSBURG



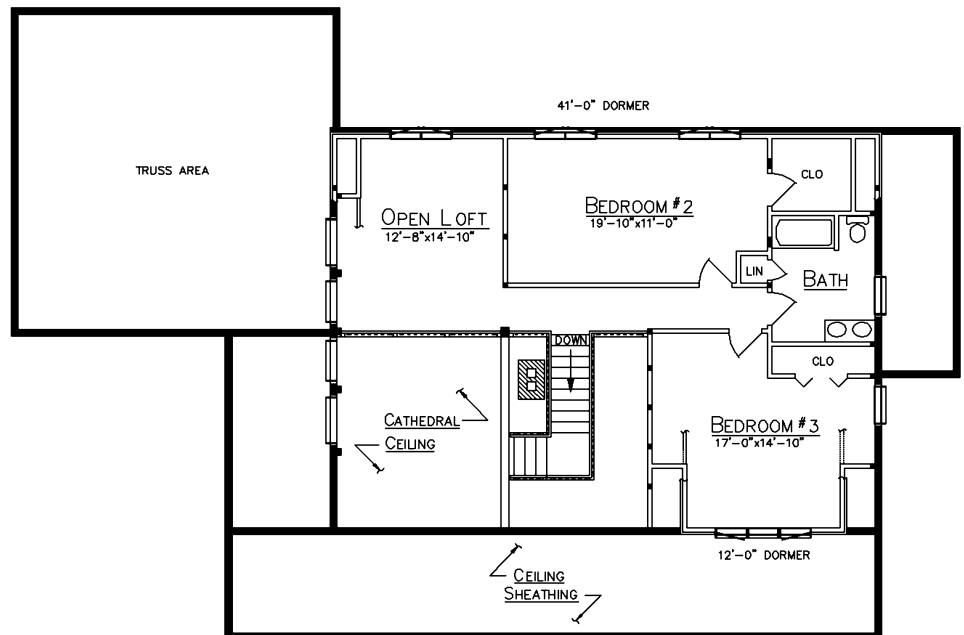
## HOME SPECIFICATIONS

First Floor	1455 Sq. Ft.
Loft	807 Sq. Ft.
Bedrooms	3
Baths	2.5
Garage	576 Sq. Ft.
Porch	392 Sq. Ft.
Deck	117 Sq. Ft.

- 41'-0" Shed, 6/12 Rear Dormer
- 12'-0" Front Gable Dormer
- 12/12 Purlin Main Roof
- 5/12 Truss Roof Garage



FLOOR PLAN



LOFT PLAN

*Since 1923*  
**Ward**  
**CEDAR LOG HOMES**  
*Our past. Your future.*

**Ward Cedar Log Homes**

PO Box 72  
 Houlton, Maine 04730

**1-800-341-1566**

info@wardcedarloghomes.com  
 www.wardcedarloghomes.com