

CEDAR LANE

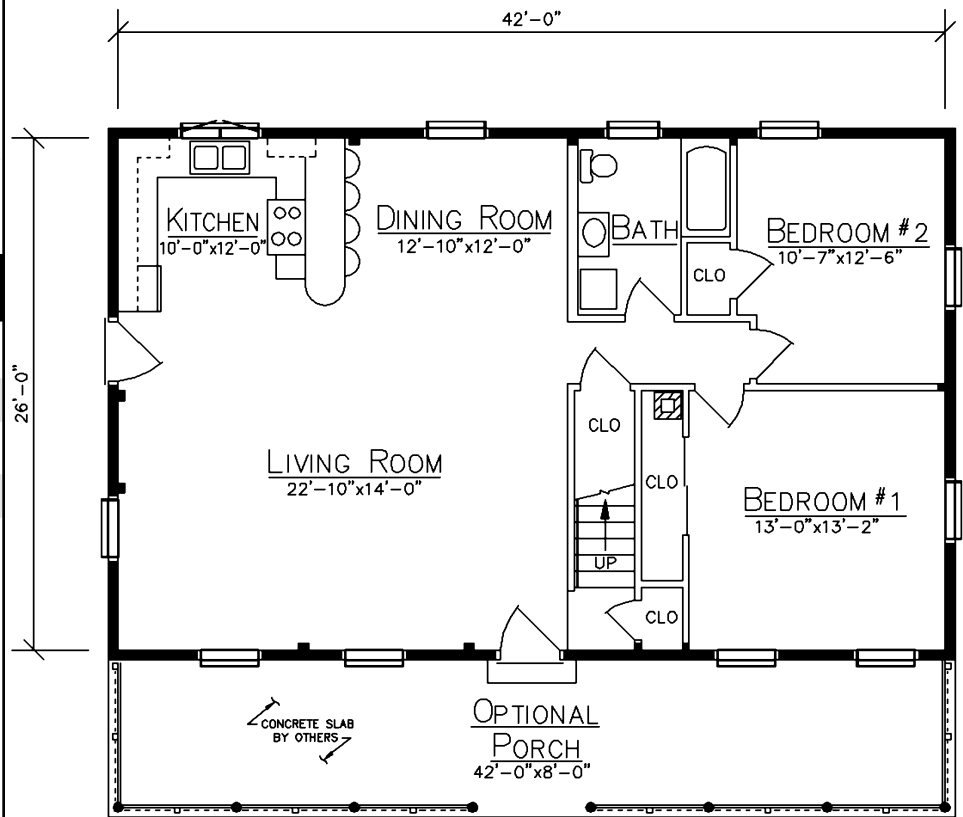


HOME SPECIFICATIONS

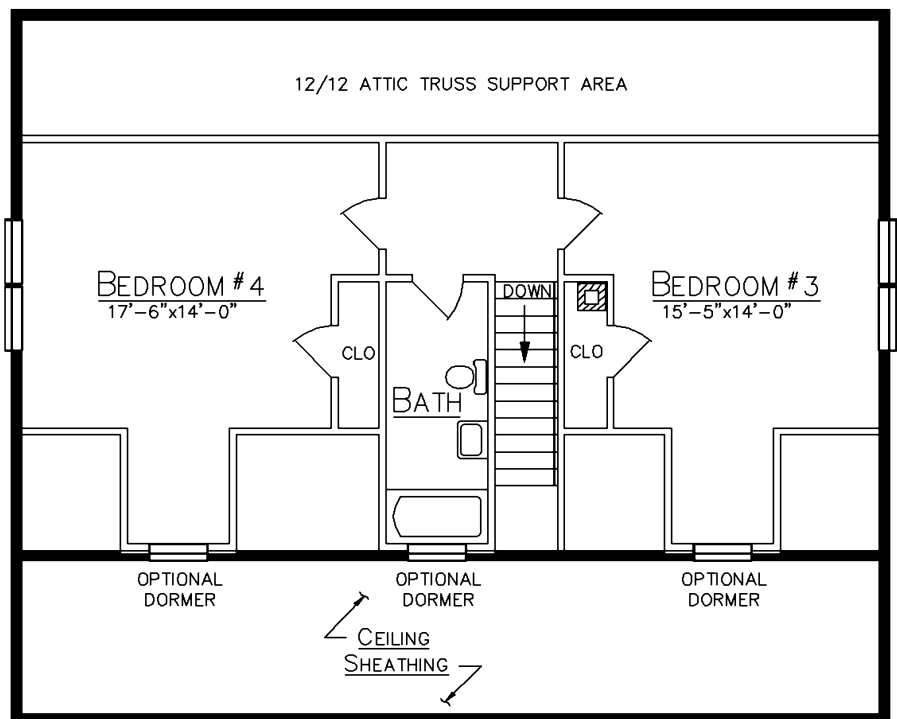
First Floor	1092 Sq. Ft.
Loft	563 Sq. Ft.
Bedrooms	4
Baths	2

Optional Front Porch 336 Sq. Ft.

- 12/12 Attic Truss Roof
- 3 Optional Dormers
- Optional Cathedral Ceiling For Living, Dining And Kitchen Areas



FLOOR PLAN



LOFT PLAN

Since 1923
Ward
CEDAR LOG HOMES
Our past. Your future.

Ward Cedar Log Homes

PO Box 72
 Houlton, Maine 04730

1-800-341-1566

info@wardcedarloghomes.com
 www.wardcedarloghomes.com