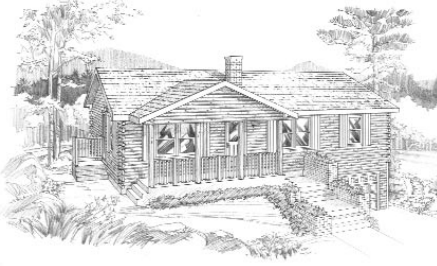


CEDAR GROVE



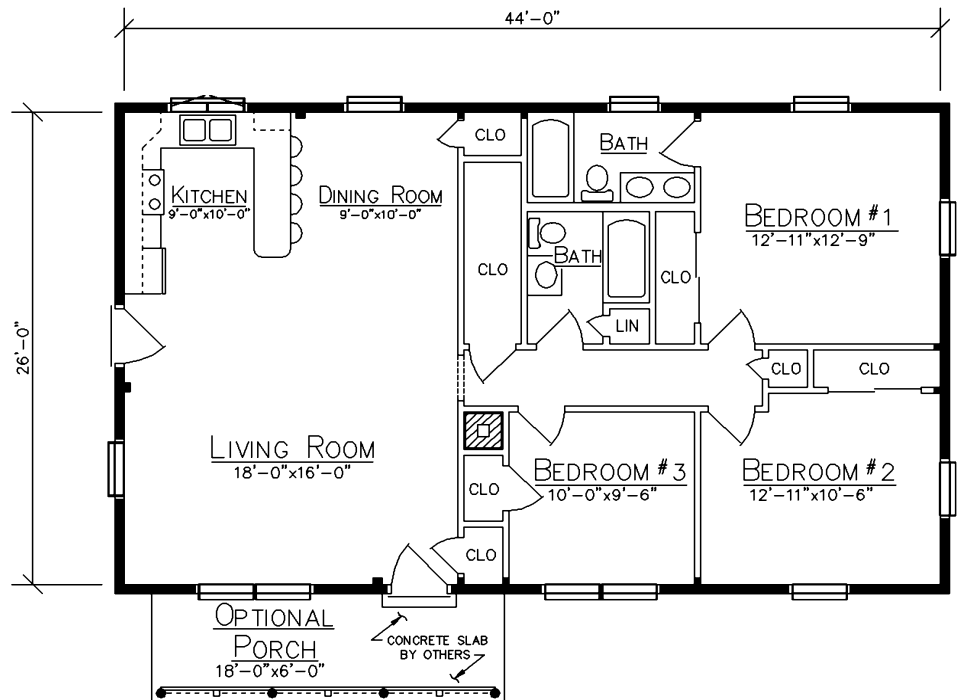
HOME SPECIFICATIONS

First Floor 1144 Sq. Ft.

Bedrooms 3

Baths 2

- 5/12 Truss Roof System
- Large, Open Living, Dining, Kitchen Area
- Optional, 5/12 Gabled Front Porch
- Optional Cathedral Ceiling For Living, Dining And Kitchen Areas



FLOOR PLAN

Since 1923
Ward
CEDAR LOG HOMES
Our past. Your future.

Ward Cedar Log Homes

PO Box 72
 Houlton, Maine 04730

1-800-341-1566

info@wardcedarloghomes.com
 www.wardcedarloghomes.com