

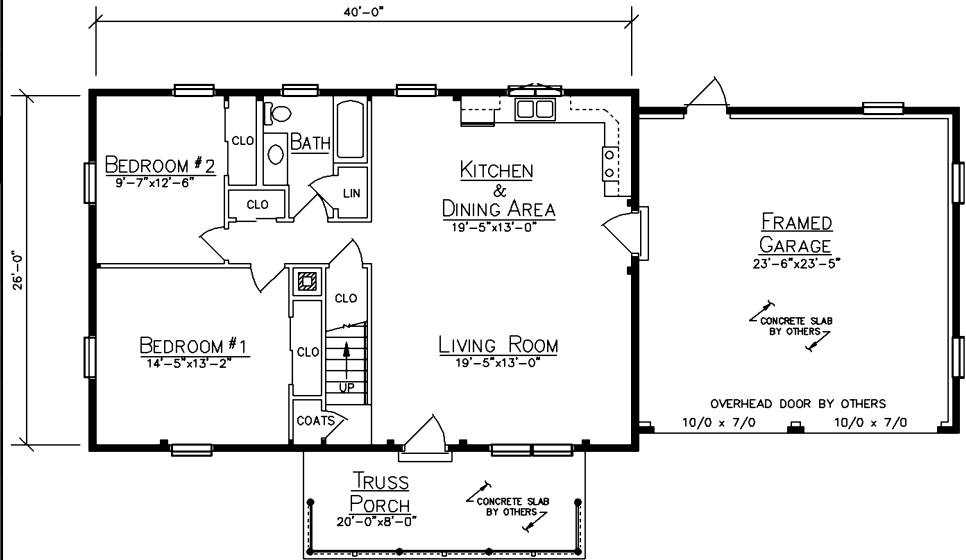
CEDAR FALLS



HOME SPECIFICATIONS

| | |
|-------------|--------------|
| First Floor | 1040 Sq. Ft. |
| Loft | 266 Sq. Ft. |
| 3 Bedrooms | 3 |
| 2 Baths | 2 |
| Garage | 552 Sq. Ft. |
| Porch | 160 Sq. Ft. |

- 12/12 Attic Trusses Bedrooms End
- 12/12 Scissor Trusses Kitchen, Dining, & Living Room
- 5/12 Standard Truss Garage



FLOOR PLAN

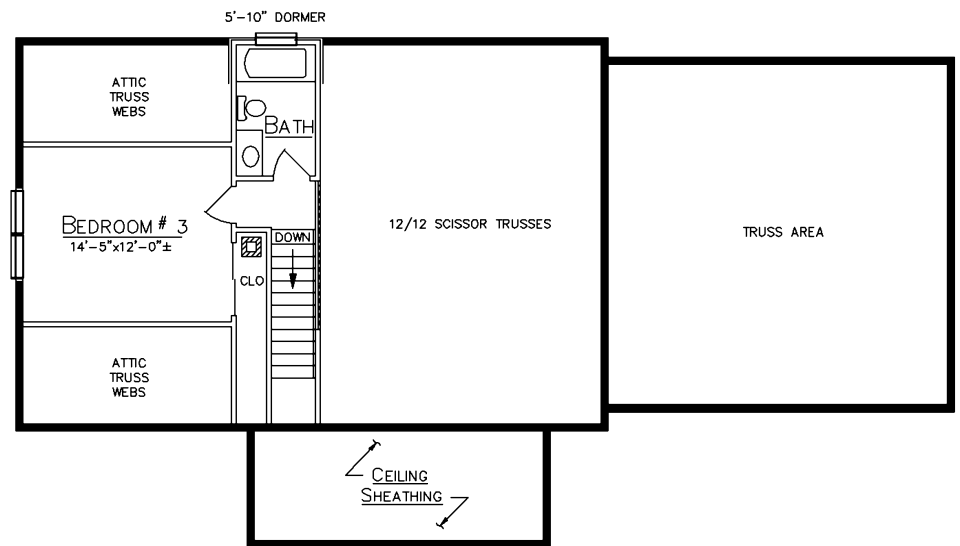


Ward Cedar Log Homes

PO Box 72
Houlton, Maine 04730

1-800-341-1566

info@wardcedarloghomes.com
www.wardcedarloghomes.com



LOFT PLAN