

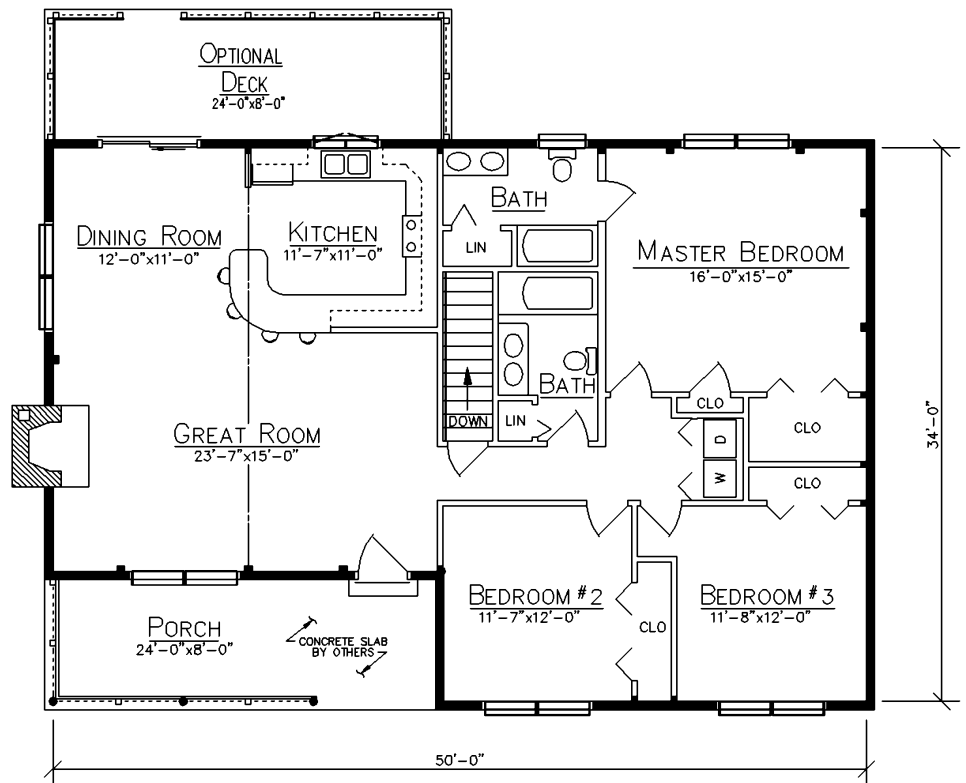
CAMDEN



HOME SPECIFICATIONS

First Floor	1508 Sq. Ft.
Bedrooms	3
Baths	2
Porch	192 Sq. Ft.
Optional Deck	192 Sq. Ft.

- 5/12 Purlin Roof Great Room
- 5/12 Truss Roof Bedrooms
- 2/12 Porch Roof
- Main Floor Laundry
- Optional 5/12 Truss Roof Great Room



FLOOR PLAN

Since 1923
Ward
CEDAR LOG HOMES
Our past. Your future.

Ward Cedar Log Homes

PO Box 72
 Houlton, Maine 04730

1-800-341-1566

info@wardcedarloghomes.com
 www.wardcedarloghomes.com