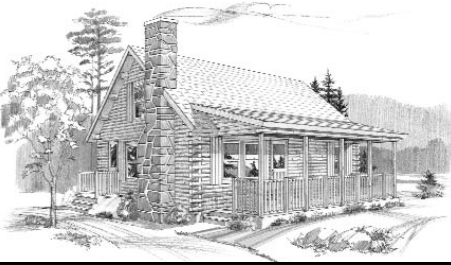


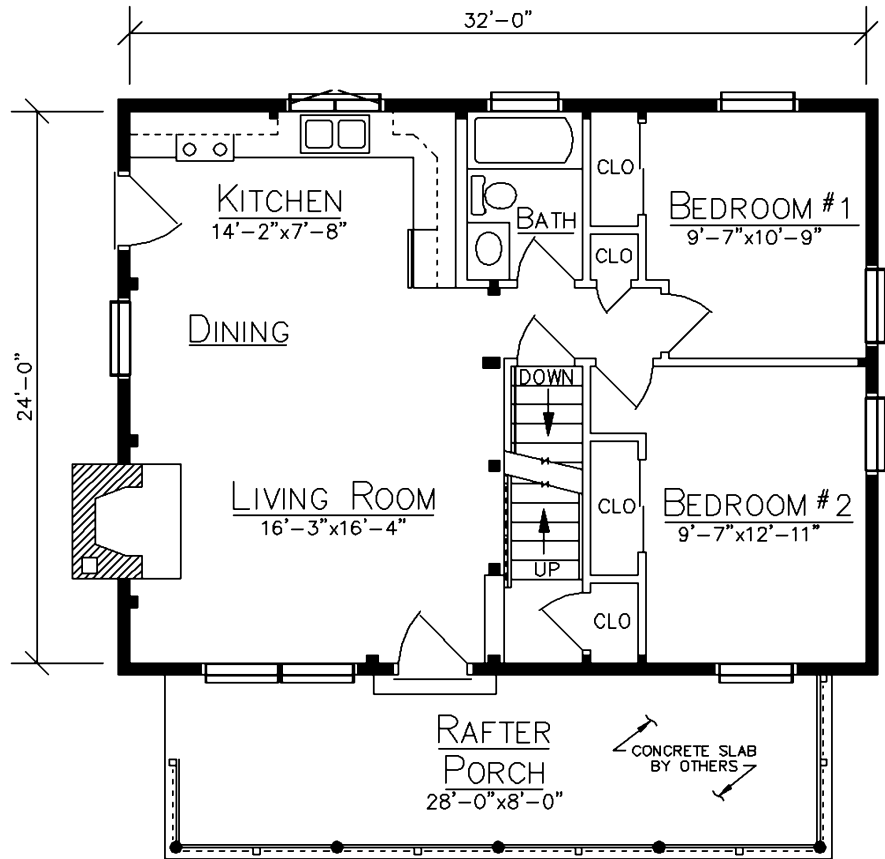
# BRUNSWICK



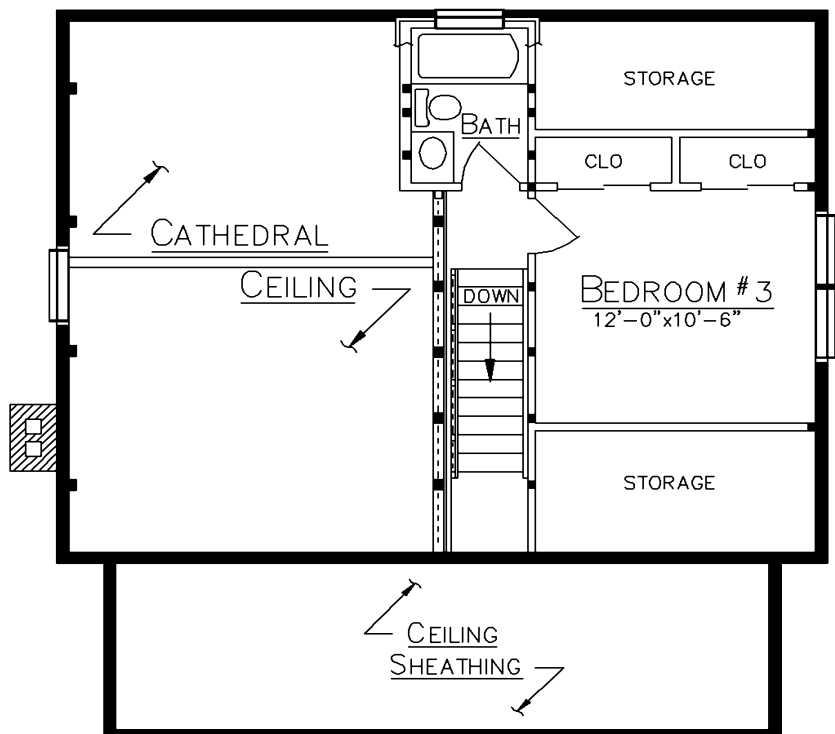
## HOME SPECIFICATIONS

First Floor	768 Sq. Ft.
Loft	212 Sq. Ft.
Bedrooms	3
Baths	2
Porch	224 Sq. Ft.

- 10/12 Purlin Roof
- 5 Ft. Rear Dormer, 3/12 Shed Roof



FLOOR PLAN



LOFT PLAN

*Since 1923*  
**Ward**  
**CEDAR LOG HOMES**  
*Our past. Your future.*

**Ward Cedar Log Homes**

PO Box 72  
 Houlton, Maine 04730

**1-800-341-1566**

info@wardcedarloghomes.com  
 www.wardcedarloghomes.com